

HOT DIP  
GALVANIZED  
RIGID ROBUST  
CHASSIS

MEKA  
NO.1

**MEKA**

100/170 m<sup>3</sup>/h

130/220 yd<sup>3</sup>/h

**DRY  
BATCH  
CONCRETE  
PLANTS**

## GENERAL SPECIFICATIONS OF THE MEKA DRY BATCH CONCRETE PLANTS

### MB-100D

- Aggregate storage capacity : 100-160 m<sup>3</sup>/130-210 yd<sup>3</sup>
- Cement capacity —2 x 100 tons cement silos (optional),
- Batching system is capable of weighing 9 m<sup>3</sup> / 12yd<sup>3</sup> of aggregate, cement, and water.

### MB-200D

- Aggregate storage capacity : 100-160 m<sup>3</sup>/130-210 yd<sup>3</sup>
- Cement capacity —3 x 100 tons cement silos (optional),
- Batching system is capable of weighing 9 m<sup>3</sup> / 12yd<sup>3</sup> of aggregate, cement, and water.





## GENERAL SPECIFICATIONS OF THE MEKA DRY BATCH CONCRETE PLANTS

	<b>MEKA MB-100D</b>	<b>MEKA MB-200D</b>
Plant Concrete Output (m <sup>3</sup> /h-yd <sup>3</sup> /h)	100-130	170-220
Number of Aggregate Bins (n)	4	4
Batching for Truckmixer (m <sup>3</sup> -yd <sup>3</sup> )	9-12	9-12
Number of Cement Silos (100 tons)	2	3
Aggregate storage capacity (m <sup>3</sup> -yd <sup>3</sup> )	100/160- 130/210	100/160 -130/210
Aggregate Loading System	Ramp or Prefeeding	Ramp or Prefeeding
Transfer belt conveyor width (mm/in.)	1000 / 40"	1200 / 48"
Aggregate discharge	In-line	In-line

## OUTSTANDING FEATURES

- Suitable for oversea transportation by 40' O/T containers
- Fully hot dip galvanized durable and long-lasting steel structure
- Flexible design



## TECHNICAL SPECIFICATION OF THE MEKA DRY BATCH CONCRETE PLANTS

### MB-100D

#### AGGREGATE BIN

- Capacity: 100/160 m<sup>3</sup>-130/210 yd<sup>3</sup>
- 4 compartments-Dimensions of each compartment at top level with extensions; central compartments 3200x4200mm (10.5'x13.5') outer compartments 2900x4200mm (9.5'x13.5').
- 8 discharge gates controlled with 8 amortized pneumatic cylinders with quick discharge (100mm (4") diameter-stroke 250mm (10") ),
- 2+2 Vibrator 200kg (440lb) capacity placed between the discharge gates in correspondence of the first sand compartment.

### MB-200D

#### AGGREGATE BIN

- Capacity: 100/100/160 m<sup>3</sup>-130/210 yd<sup>3</sup>
- 4 compartments-Dimensions of each compartment at top level with extensions; central compartments 3200x4200mm (10.5'x13.5') outer compartments 2900x4200mm (9.5'x13.5').
- 8 discharge gates controlled with 8 amortized pneumatic cylinders with quick discharge (100mm (4") diameter-stroke 250mm (10") ),
- 2+2 Vibrator 200kg (440lb) capacity placed between the discharge gates in correspondence of the first sand compartment.





# MEKA

100/170 m<sup>3</sup>/h - 130/220 yd<sup>3</sup>/h  
**DRY BATCH CONCRETE PLANTS**

MEKA CRUSHING SCREENING AND CONCRETE BATCHING TECHNOLOGIES  
[www.mekaglobal.com](http://www.mekaglobal.com)



## TECHNICAL SPECIFICATION OF THE MEKA DRY BATCH CONCRETE PLANTS

### MB-100D

#### AGGREGATE BATCHING

- Up to 9 m<sup>3</sup> (12 yd<sup>3</sup>) batches
- Aggregate weighing hopper thickness 4mm,
- Geometric capacity 14 m<sup>3</sup>(18yd<sup>3</sup>)
- 9 m<sup>3</sup> capacity weighing system with 4 homologated load cells,
- 1 ea 200kg (440lb) vibrator bolted on the aggregate weighing hopper in correspondence with sand compartment

#### CEMENT BATCHING

- 4 m<sup>3</sup> (5.2yd<sup>3</sup>) real geometric bin volume, twin outlet at bottom, 2 screw conveyors with dimension Ø273x4000mm (Ø 10.7"x13') mounted directly at bottom outlets for extracting cement. Weighing systems with 4 homologated load cells, maximum weighing capacity 5 tons(5.5 short tons). On bin 2 ea vibrator, 200kg (440lb) capacity are fixed.

#### WATER BATCHING

- 2" Pulse counter and electro pneumatic sphere valve.

### MB-200D

#### AGGREGATE BATCHING

- Up to 9 m<sup>3</sup> (12 yd<sup>3</sup>) batches
- Aggregate weighing hopper thickness 4mm,
- Geometric capacity 14 m<sup>3</sup>(18yd<sup>3</sup>)
- 9 m<sup>3</sup> capacity weighing system with 4 homologated load cells,
- 1 ea 200kg (440lb) vibrator bolted on the aggregate weighing hopper in correspondence with sand compartment

#### CEMENT BATCHING

- 4 m<sup>3</sup> (5.2yd<sup>3</sup>) real geometric bin volume, twin outlet at bottom, 2 screw conveyors with dimension Ø323x4000mm (Ø 12.7"x13') mounted directly at bottom outlets for extracting cement. Weighing systems with 4 homologated load cells, maximum weighing capacity 5 tons(5.5 short tons). On bin 2 ea vibrator, 200kg (440lb) capacity are fixed.

#### WATER BATCHING

- 4" Pulse counter and electro pneumatic sphere valve.



## TECHNICAL SPECIFICATION OF THE MEKA DRY BATCH CONCRETE PLANTS

### MB-100D

#### EXTRACTOR BELT CONVEYOR

- 1000 x 10.000mm,(40"x32')
- Self lubrication rollers arranged in concave form, diameter 89mm (3.5")
- Drive drum diameter 500mm ( 20") covered with anti-slip rubber,
- 22 kW ( 20Hp ) three phase electric motor belt speed 1.1 m/sec.(3.6'/sec.)

#### TRANSFER BELT CONVEYOR

- 1000 x 10.000mm(40"x32')
- Belt inclination 28 degrees,
- Self lubrication rollers arranged in concave form, diameter 89mm(3x5")
- Drive drum diameter 500mm(20"), covered with anti-slip rubber,
- 22kW ( 30Hp ) three phase electric motor, belt speed 2,4m / sec.(7.8'/sec),

#### HOPPER FOR LOADING TRUCK MIXER

- Hopper produced from 5mm thick steel, discharge section covered with anti-wear plates,
- Outlet diameter 500mm(20"),
- Water discharge piping with 2" circular pipe with 16 nozzles 10mm (0.4") diameter,
- Frame in welded / bolted construction,
- Walkways around hopper, handrails and ladder on the frame

### MB-200D

#### EXTRACTOR BELT CONVEYOR

- 1000x 9550mm (40"x32')
- Self lubrication rollers arranged in concave form, diameter 89mm. (3.5")
- Drive drum diameter 500mm (20") covered with anti-slip rubber,
- 22 kW (30Hp) three phase electric motor belt speed 1.4 m/sec.(4.6'/sec.)

#### TRANSFER BELT CONVEYOR

- 1200 x 10.000mm(48"x32'),
- Belt inclination 28 degrees,
- Self lubrication rollers arranged in concave form, diameter 89mm(3x5"),
- Drive drum diameter 500mm (20"), covered with anti-slip rubber,
- 30kW (40Hp) three phase electric motor, belt speed 2,4m / sec.(7.8'/sec.),

#### HOPPER FOR LOADING TRUCK MIXER

- Hopper produced from 5mm thick steel, discharge section covered with anti-wear plates
- Rubber pipe at outlet,
- Water discharge piping with 4" circular pipe with 20 nozzles 10mm (0.4") diameter,
- Frame in welded / bolted construction,
- Walkways around hopper, handrails and ladder on the frame

# MEKA

100/170 m<sup>3</sup>/h - 130/220 yd<sup>3</sup>/h  
DRY BATCH CONCRETE PLANTS

MEKA CRUSHING SCREENING AND CONCRETE BATCHING TECHNOLOGIES  
[www.mekaglobal.com](http://www.mekaglobal.com)

## GENERAL SPECIFICATIONS OF THE MEKA DRY BATCH CONCRETE PLANTS





## TECHNICAL SPECIFICATION OF THE MEKA DRY BATCH CONCRETE PLANTS

### CAPACITY 100/170 m<sup>3</sup>/h - 130/220 yd<sup>3</sup>/h

#### COMPRESSED AIR SYSTEM

- 1 compressor, with 500lt (132 US gal) tank and 7.5Kw (10Hp) electric motor, 1000lt/min(264 US gal) air capacity, 8 bar,
- 8 units 24v 5 way electric valve to set in action 8 pneumatic cylinders (discharge gates)
- 1 unit 24v 5 way electric valve to set in action the pneumatic cylinder (cement weighing hopper)

#### STEEL BASE FRAME FOR MOBILE PLANT

- Steel base structure for aggregate bin and transfer belt conveyor so that the plant can be placed on compacted and leveled foundation or on concrete floor. Steel base structure is realized in HEA 160 profile.

#### RUST PREVENTION

- All surfaces are fully hot dip galvanized.

#### BENEFITS OF HOT DIP GALVANIZING?

##### LONG-LASTING PROTECTION

**BARRIER  
PROTECTION**

**CATHODIC  
PROTECTION**



#### HOT DIP GALVANIZED?

The process of dipping a prepared article into molten zinc, resulting in the production of a hot dip galvanized coating on a steel article.

Galvanised steel has a strong protective coating of zinc that has a metallurgical bond to it. This is what makes galvanising a corrosion protection solution for steel that is intended to have a long service life that is easily inspected and self maintaining.

# MEKA

100/170 m<sup>3</sup>/h - 130/220 yd<sup>3</sup>/h  
DRY BATCH CONCRETE PLANTS

MEKA CRUSHING SCREENING AND CONCRETE BATCHING TECHNOLOGIES  
[www.mekaglobal.com](http://www.mekaglobal.com)

## OPTIONAL EQUIPMENT OF MEKA DRY BATCH CONCRETE PLANTS

- **Bolted/Weldet cement silo capacity 100-300 tons (110-330 short tons)**  
Suitable for container transportation with 1 unit 40' O/T container. Complete with loading pipe, fluidification system, butterfly valve at outlet, safety valve to control the silo pressure, ladder to reach silo roof, handrailing at silo roof.
- **Cement Screw Ø323x7500mm (Ø11"x24.6')**  
Capacity 80 t/h (88short ton/h), motor power 7,5 kW (10Hp), complete with knee joint
- **Cement Silo Top Filter**  
Jet pulse filter, Filtering surface 24,5
- **Dust Extracting Plant at Charging Point**  
Jet pulse filter, Filtering surface 55 m<sup>2</sup> (592 ft<sup>2</sup>), Suction fan 6000 m<sup>3</sup>/h, 11kW (15 Hp), Complete with suction tubes.
- **Admixture Batcher**  
2x100 kg capacity, Complete set with weighing and pumping system
- **Flowmeter**





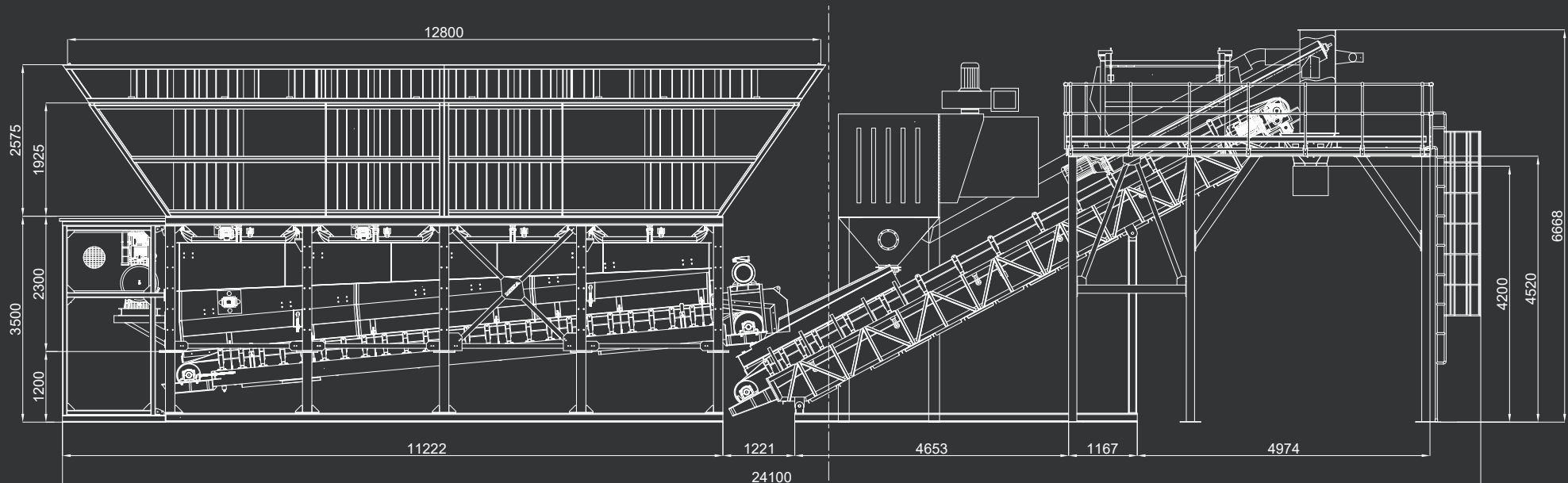
# MEKA

100/170 m<sup>3</sup>/h - 130/220 yd<sup>3</sup>/h  
DRY BATCH CONCRETE PLANTS

MEKA CRUSHING SCREENING AND CONCRETE BATCHING TECHNOLOGIES  
[www.mekaglobal.com](http://www.mekaglobal.com)

## GENERAL SETTLEMENT

DRY BATCH SERIES CONCRETE PLANTS



# MEKA

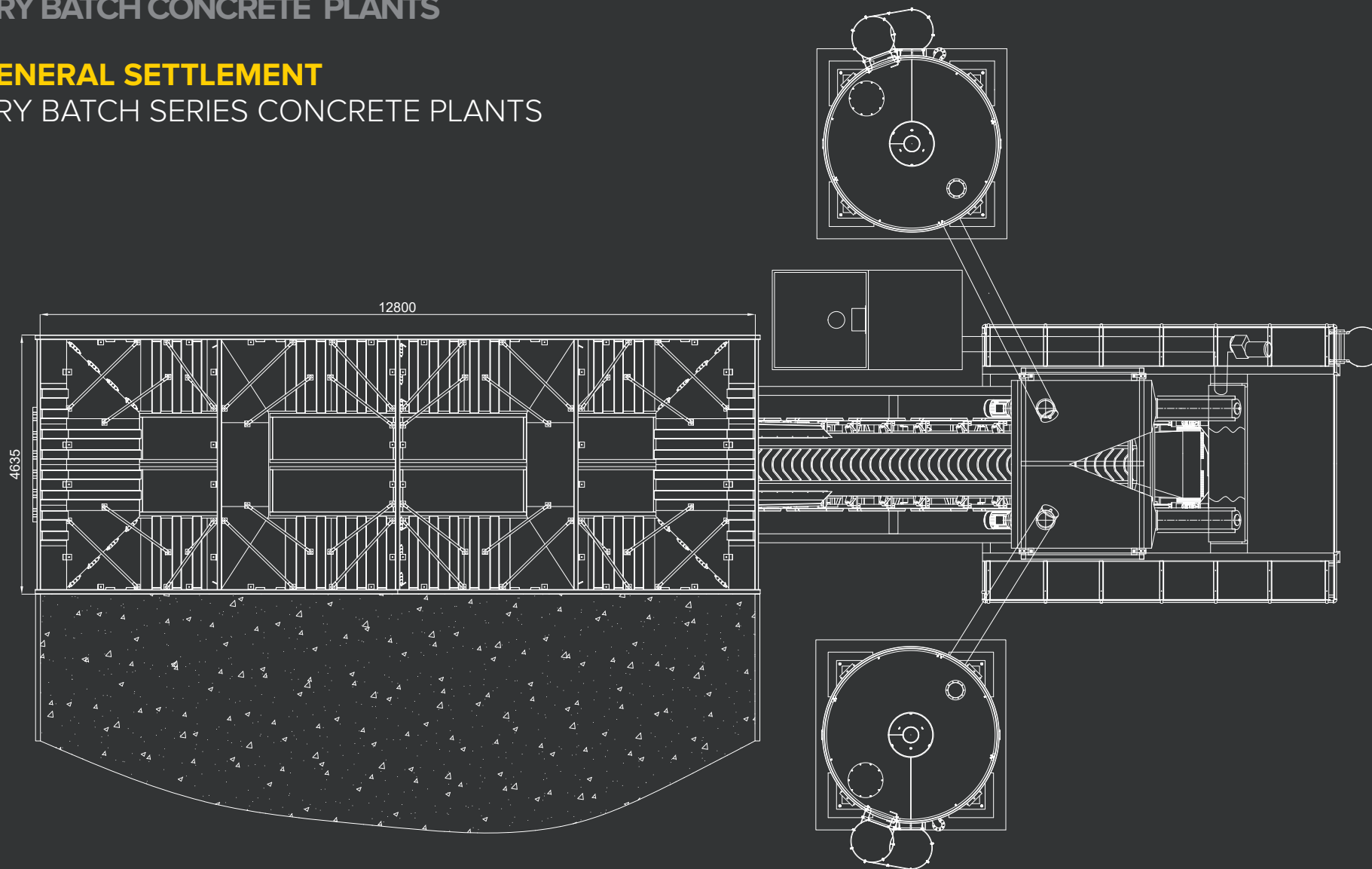
100/170 m<sup>3</sup>/h - 130/220 yd<sup>3</sup>/h

DRY BATCH CONCRETE PLANTS

**GENERAL SETTLEMENT**

DRY BATCH SERIES CONCRETE PLANTS

MEKA CRUSHING SCREENING AND CONCRETE BATCHING TECHNOLOGIES  
[www.mekaglobal.com](http://www.mekaglobal.com)





# MEKA

100/170 m<sup>3</sup>/h - 130/220 yd<sup>3</sup>/h

**DRY BATCH CONCRETE PLANTS**

MEKA CRUSHING SCREENING AND CONCRETE BATCHING TECHNOLOGIES  
[www.mekaglobal.com](http://www.mekaglobal.com)



## TRANSPORTATION

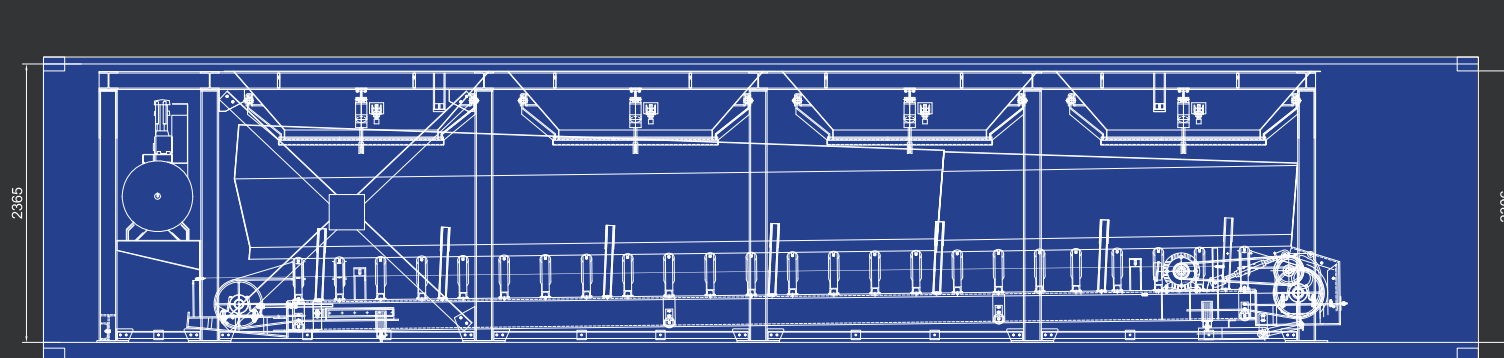
- Basic setup of the plant, excluding the options, can be transported in 4x40' open top containers (no oversize).



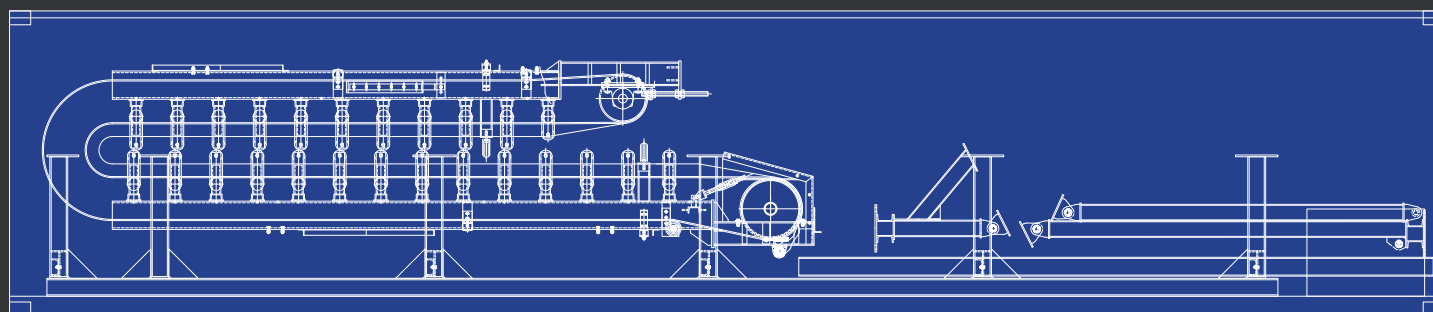
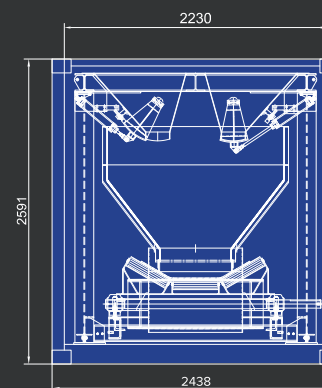
100/170 m<sup>3</sup>/h - 130/220 yd<sup>3</sup>/h  
**DRY BATCH CONCRETE PLANTS**

## TRANSPORT PLAN

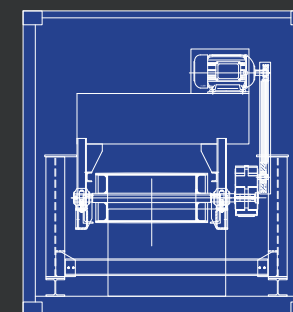
DRY BATCH SERIES CONCRETE PLANTS



**1. 40' O/T CONTAINER**



**2. 40' O/T CONTAINER**





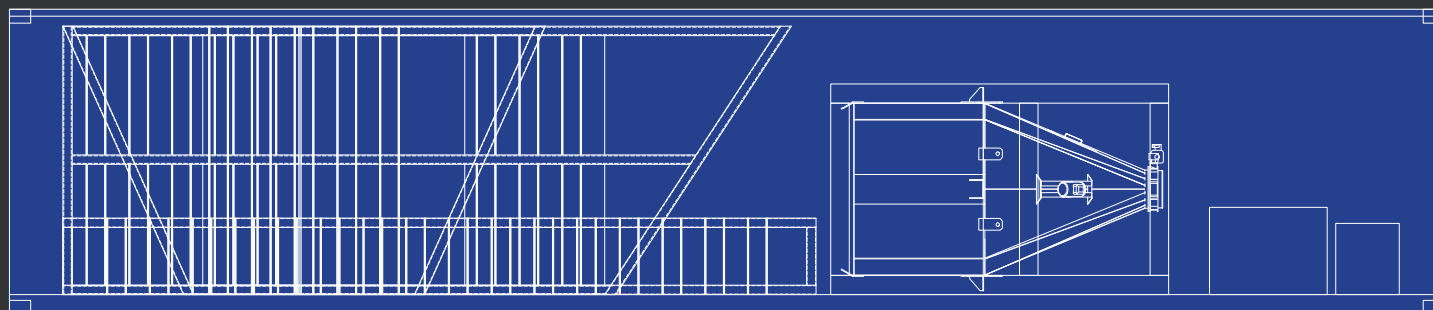


100/170 m<sup>3</sup>/h - 130/220 yd<sup>3</sup>/h

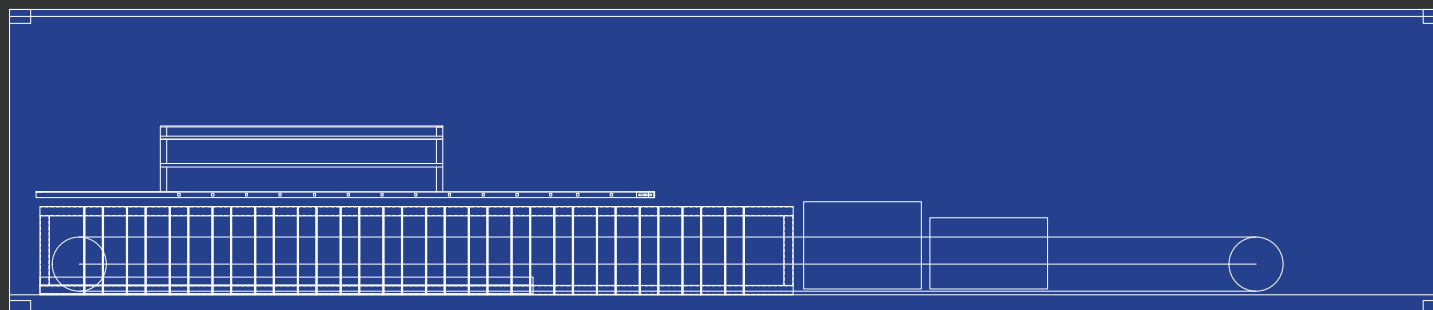
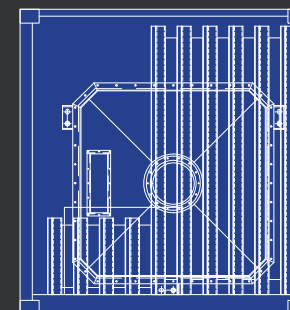
**DRY BATCH CONCRETE PLANTS**

## TRANSPORT PLAN

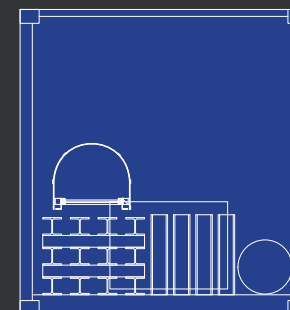
DRY BATCH SERIES CONCRETE PLANTS



**3. 40' O/T CONTAINER**



**4. 40' O/T CONTAINER**



# MEKA

100/170 m<sup>3</sup>/h - 130/220 yd<sup>3</sup>/h  
DRY BATCH CONCRETE PLANTS

MEKA CRUSHING SCREENING AND CONCRETE BATCHING TECHNOLOGIES  
[www.mekaglobal.com](http://www.mekaglobal.com)



## MEKA IS A PROFESSIONAL SOLUTION

Durability is not just another aspect of MEKA Quality, but a philosophy of manufacturing coming from the very beginning of MEKA. MEKA has proven to be extremely reliable in hard nature conditions, extreme temperatures, long continuous operation, high dynamic stress and heavy loads. Therefore, Meka is one of preferred suppliers for global leaders of construction and cement industry, such as Hochtief, Fluor, Enka, Strabag, LafargeHolcim, Cemex, and Heidelberg Cement, and our brand is known to be “the choice of professionals” worldwide.







# MEKA

CRUSHING  
SCREENING AND  
CONCRETE BATCHING  
TECHNOLOGIES

#### HEAD OFFICE

Camlica Mah. Anadolu Bulvari  
147. Sokak Atlas Is Merkezi  
No:5/9 Gimat ANKARA - TURKEY  
+90 312 397 91 33-34-35  
Fax: +90 312 397 10 34  
sales@mekaglobal.com

[www.mekaglobal.com](http://www.mekaglobal.com)