



Vertical Shaft Impact Crushers

MVI 70 and MVI 90 Technical Specification

Generally used for getting fine product and converting the flat shape materials into very cubicle ones. Their work principle is based on "rock to rock" which provides highly reduced wear part costs.



FEATURES

MAINTENANCE

Easy maintenance thanks to the hydraulic top cover lifter.

BIFLOW

Precise ability to control the product gradation by adjusting the cascade ratio. Highly efficient crushing ratio and high volumes of cubically shaped product.

CRUSHER BODY

Thick and solid modular inferior body machine united design with motor base. Compact design which fitted to the 40" DC container by sliding on the bars. 45mm max feeding size, maintenance hatches in accordance with work safety.

BEARINGS

Long housing, one level of upper class heavy duty SKF bearings and the rotor operating near upper bearing provides more safety.

SECURITY

Vibration sensor providing micro-electromechanical sensitive vibration measurement. Sensitive temperature tracking for upper and lower bearings thanks to its sensors.

ROTOR

The quality of the dynamic rotor balance: G 6.3 according to ISO 1940/1 1. Low maintenance and high efficiency because of "rock on rock" crushing system and stonebox design.

V-BELT

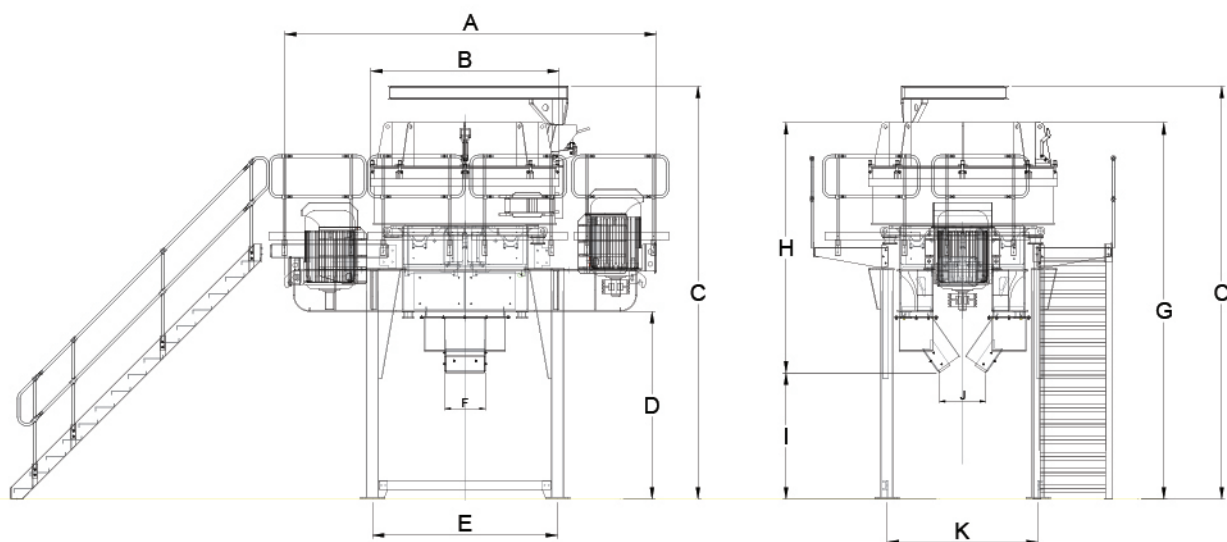
Durable V-belt ensuring long-term use.

LUBRICATION

Automatic lubrication system with three lines.

WEAR PARTS

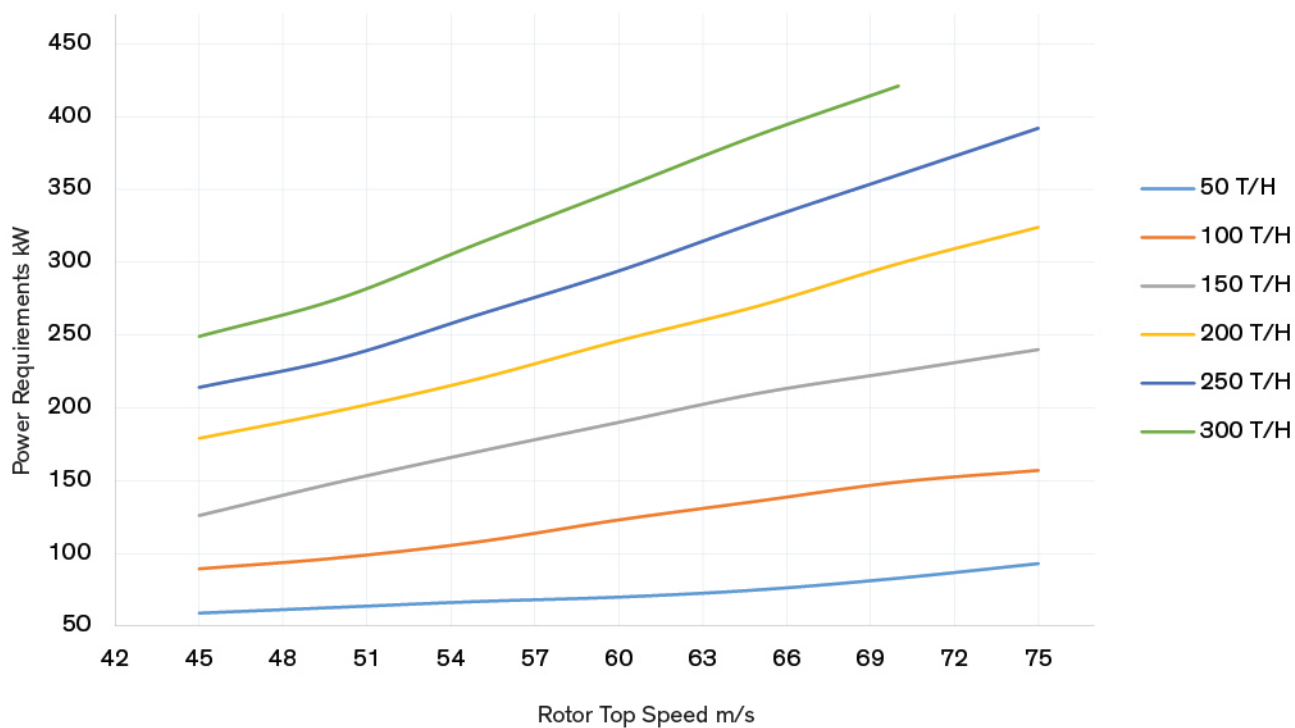
Enhanced lower chute and liners. Class Tungsten carbide long-life wear part which is made in Germany.



Clearance Dimensions

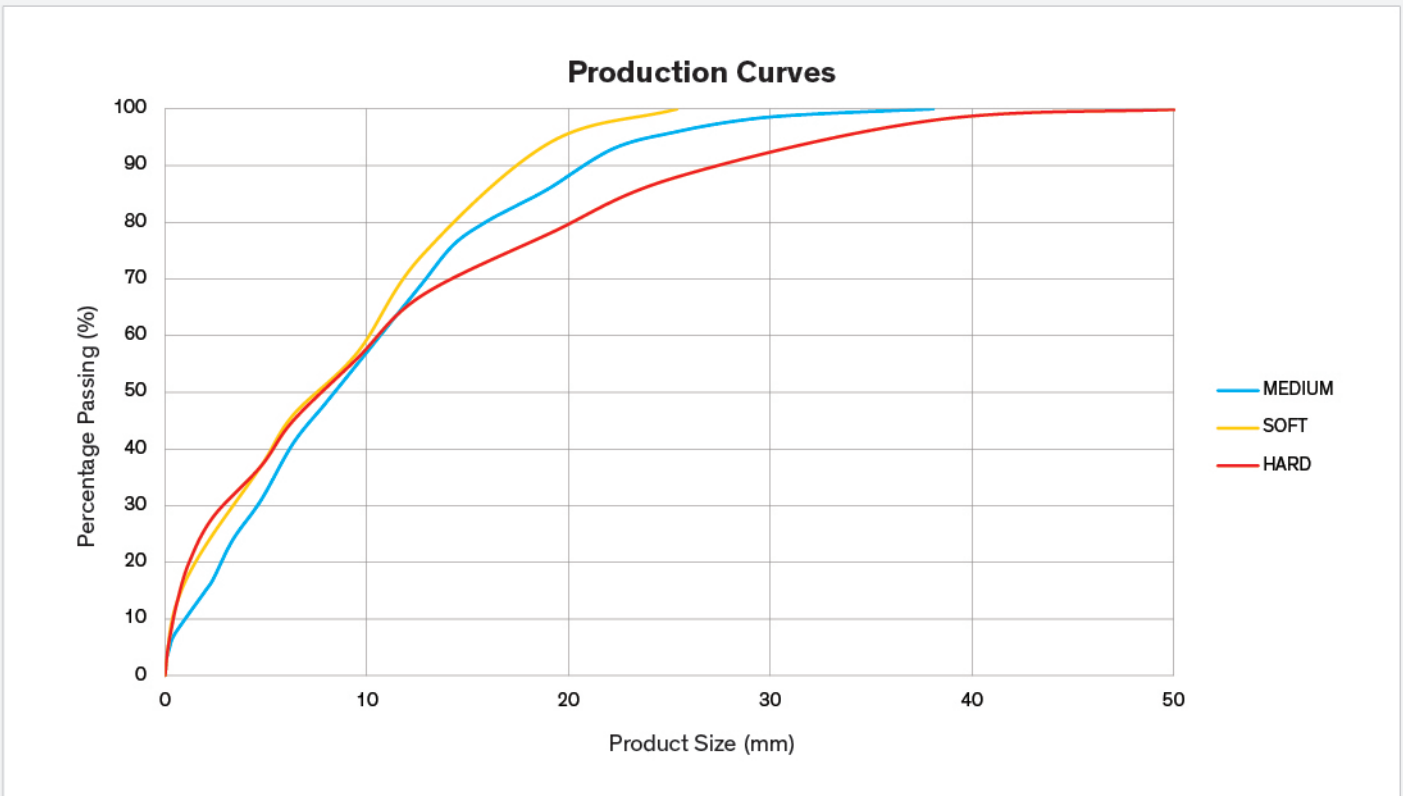
Models	A	B	C	D	E	F	G
MVI 70	2170	1346	3120	2690	1602	2094	338
	85 3/8	53	122 7/8	105 7/8	63 1/8	82 1/2	13 1/4
MVI 90	2370	1546	3520	3080	1802	2394	418
	93 1/4	60 7/8	138 5/8	121 1/4	71	94 1/4	16 1/2

Power Requirement



Capacities & Technical Specifications

Models	Rotor Dimensions (mm)	Maximum Feed Size (mm)	Capacity (t/h)	Power (kW/rpm)	Weight (kg)
MVI 70	Ø700	45	150	2x110/1500	10000
MVI 90	Ø900	45	300	2x200/1500	14000



Contact Information

MEKA Crushing & Concrete Batching Technology
Camlica Mh. Anadolu Bl. 147. St Atlas Is Merkezi No: 5/9 - 10
Gimat, ANKARA / TURKEY

Phone : +90 312 397 91 33
Email : sales@mekaglobal.com
www.mekaglobal.com

